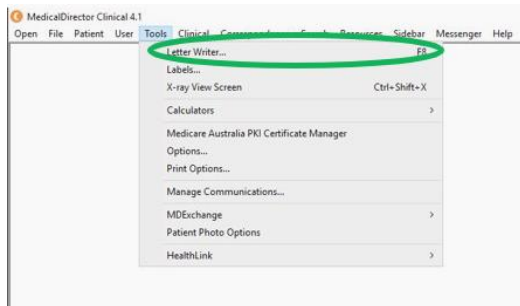
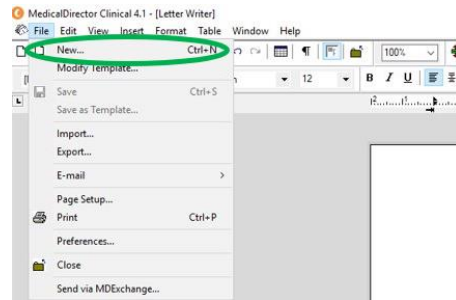


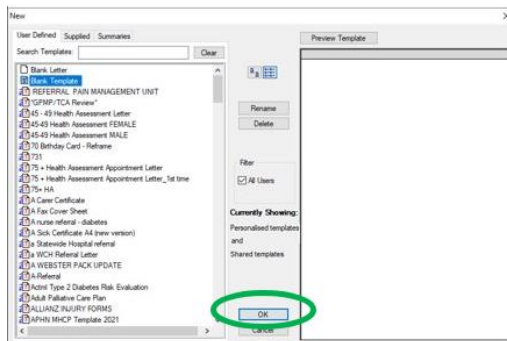
# Instructions for adding referral forms to Medical Director 4.1



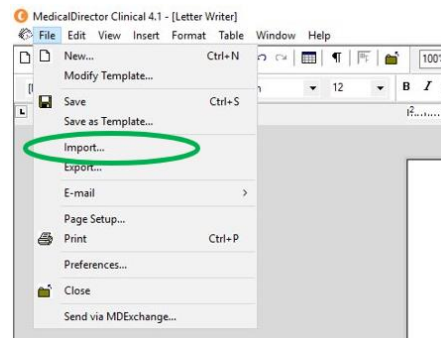
1. Load Medical Director and start letter writer



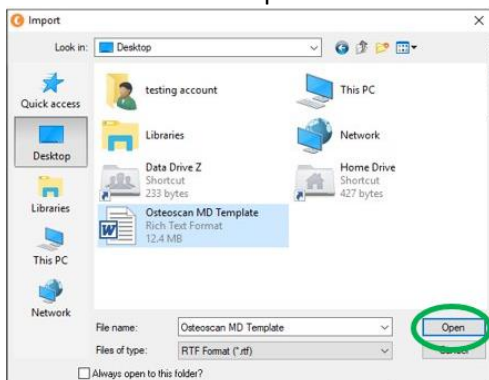
2. From the file menu select New



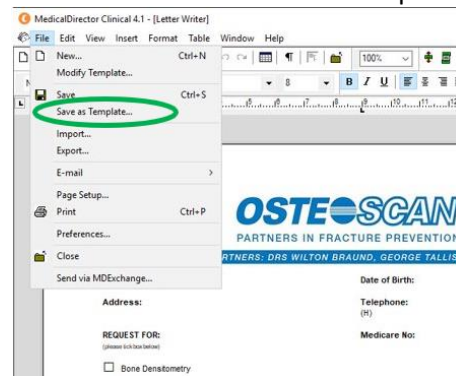
3. Select Blank Template and click ok



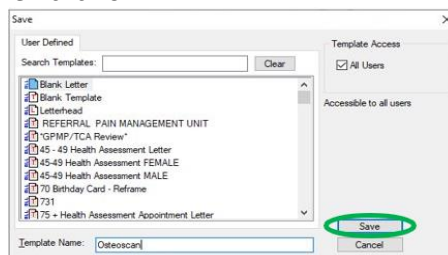
4. From the file menu select Import



5. Navigate to the location to which you saved the forms and select, then click ok



6. From the file menu select Save as Template



7. Give the Template a relevant name and click save. You can now use your referral for you have installed